

AUSTIN mini mk II



still the incredible revolution!

MinipassionMini.com

AUSTIN **mini** Mk. II SALOON



Simple and straightforward, the fascia of the Mini Saloon contains a single instrument, giving all the necessary information for the satisfactory operation of the car. In the centre of the tray-rail is a small panel containing the ancillary switches, including ignition/starter switch. A wind-screen washer is standard equipment and a heater can be fitted at extra cost if desired.

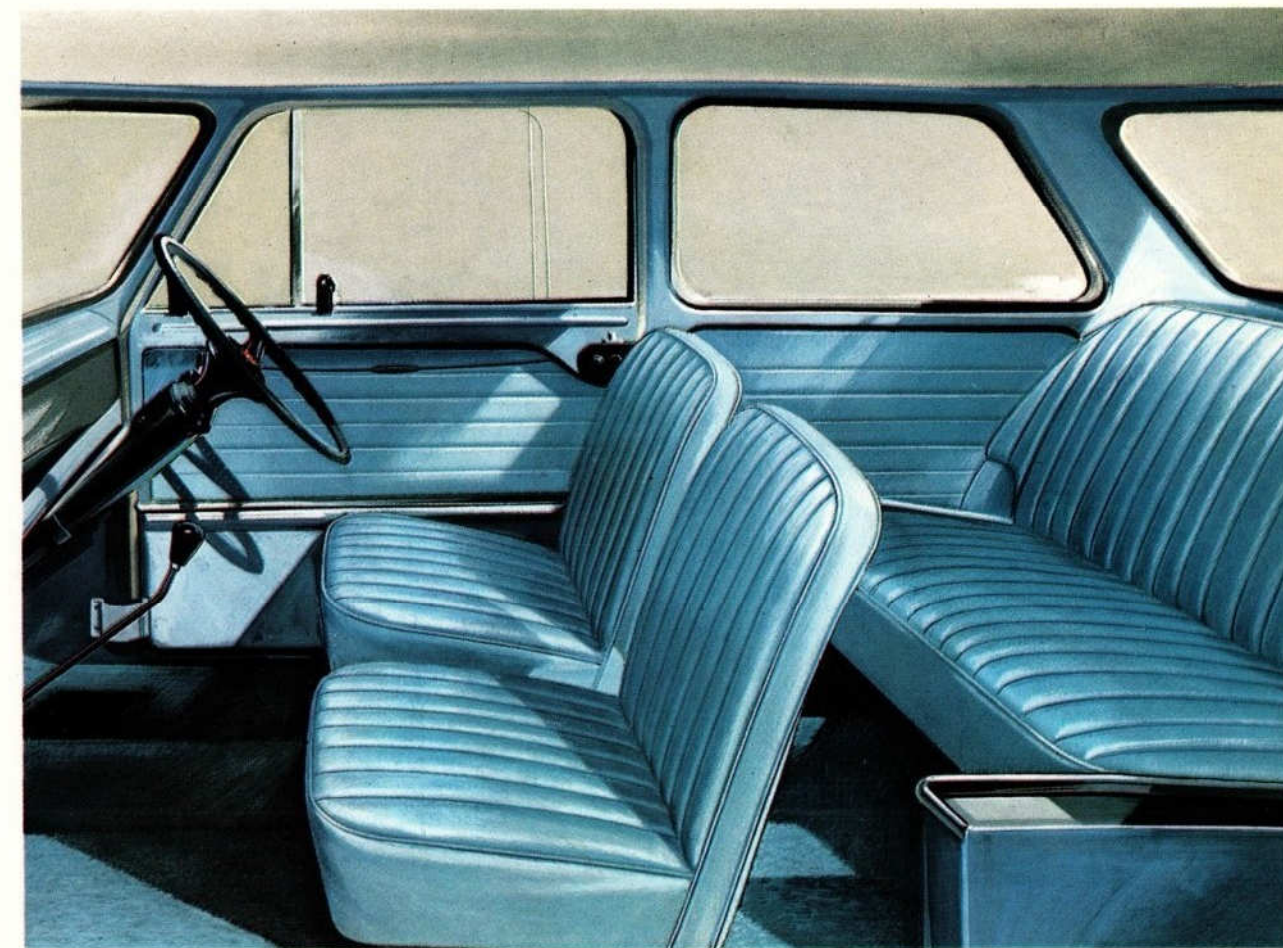
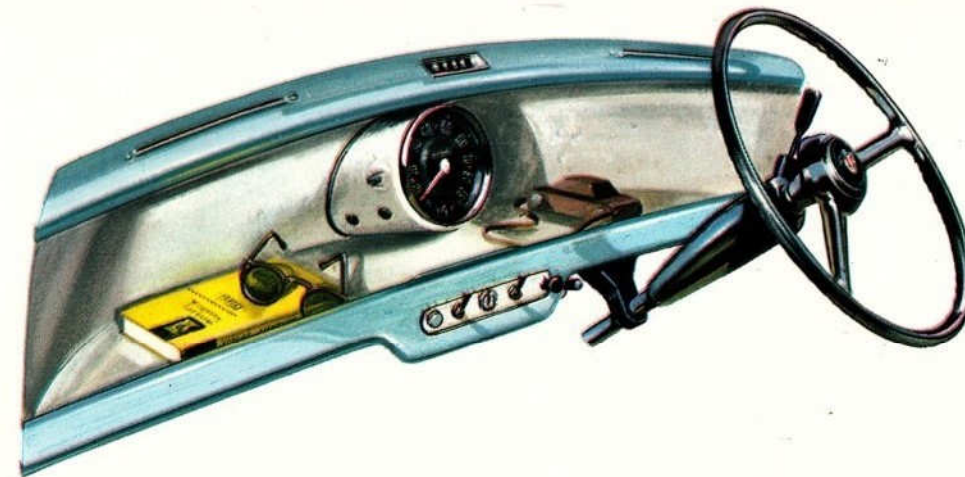
All Minis have a new switch on the steering-column, which incorporates headlamp flasher and high/low beam control, horn and direction indicators.

See how roomy is the interior of the Mini Mk. II Saloon. Sit inside and discover how a masterly achievement of design and styling has provided, inside a car of such modest outside dimensions, as much room for head, legs, elbows—and luggage!—as in many much bigger cars.

Each of the two front seats tips forward to give easier access to the rear and the driver's seat is adjustable for leg reach. All Mini seats are restfully upholstered and with the interior trim are completed in vinyl-coated fabric. Being washable, this hard-wearing material can be kept spotlessly clean throughout its entire life. Anchorage points are provided in all Mini models, to which your Distributor or Dealer can fit BMC approved accessory seat belts.

The fabulous Mini—the car with the world-famous name—is now better than ever! There's a distinctive new radiator grille and surround, restyled, bigger stop/tail/flasher lamp units and, on the Super De-luxe Saloon, a potent, new 998-c.c. power unit, giving better acceleration, higher top speed, and greater all-round performance. Then there's the well-proven front-wheel drive with its fantastic roadholding qualities—particularly in bad weather. Not forgetting the big car ride of Hydrolastic[®] suspension with its smoothness and lateral stability on corners. Optional automatic transmission is another great BMC achievement for the Mini. You have the choice of fully automatic or fully manual control over all four gears. Just slip into 'Drive' and go, relaxed and without effort. Change back to manual control whenever you like. A better steering lock, more convenient controls, and wider rear window are among many other improvements that make the Mk. II Mini the greatest yet.

MinipassionMini.com





BMC ENGINEERING PERFECTION

MinipassionMini.com

SEE THE FULL RANGE OF BMC ACCESSORIES

Your Austin Dealer will be pleased to give full details of approved accessories which can be fitted to your car. Below is a list specially selected for use with the Austin Mini.

Door Pocket Ashtray. Felt 'Comfykit'. Touch-up Paint. Switch Panel. Wing Mirrors. Auxiliary Lamps. Seat Protectors, Covers, and Seat Belts. Individual Hand Tools. Anti-mist Panel. Interior Bonnet Release Catch. Car-valeting Items. Exhaust Deflectors. Alpine or Windtone Horn Sets. Travel Rugs. Parking Lamp. Mud-flaps. Roof rack. Interior/Exterior Cleaning Fluid. Supplementary Instruments.



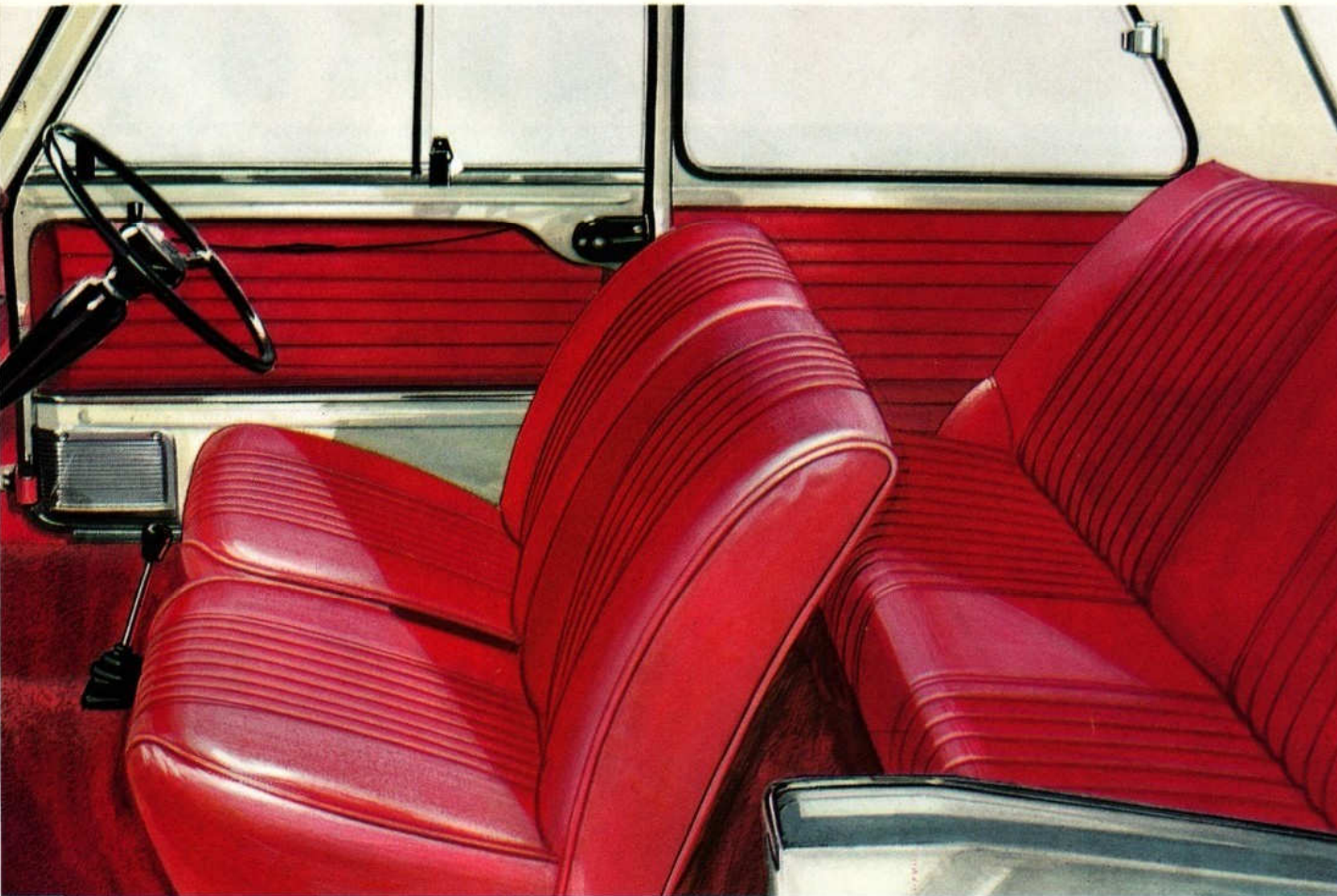
MinipassionMini.com

You will be astounded at the amount of luggage that can be carried in the Mini! 5½ cubic feet (0.16 m.³) of space in the luggage boot is augmented by a drop-down lid that serves as an additional carrying plat-

form. For this purpose and as a legal requirement, the number-plate, with its illuminating lamp, has been hinged to the lid so that it hangs vertically and remains visible when the boot is open. The boot is

lockable and also carries the spare wheel, which is covered by a rubber mat on the Super De-luxe Saloon.

AUSTIN mini Mk. II SUPER DE-LUXE SALOON



Specially designed for your increased comfort, the Mini Mk. II Super De-luxe has new-style, softly upholstered seats trimmed in hard-wearing vinyl-coated fabric. Big wide-opening doors, with sliding windows and full-width, deep pockets, ease entry and exit.

A fresh-air heater which can also be used to supply cold fresh air, evens out variations in ambient

temperature and also provides the means of freeing the screen from frost or condensation. Further touches of luxury include two extra instruments to record oil pressure and water temperature, adjustable passenger's seat, and kick-protectors to the doors and sills. Ashtrays are fitted for the use of front and rear passengers and a hard-wearing fitted carpet covers the entire floor.

EXPORT AVAILABILITY

To equip the Mini for the markets of the world, certain variations from the standard specification are available. For this reason heater units are NOT considered standard equipment and the following alternatives can be supplied at no extra charge:

Right- or left-hand Steering
Lighting and Flasher Indicator Equipment as required

In addition to the two models detailed on the specification page of this brochure, a special Export Saloon is also available equipped as follows:

Adjustable Passenger Seat; Carpets Front and Rear; Two Crushable Sun Visors; Hinged Quarter-lights; Bright Plastic Windscreen and Back-light Finishers; Stainless Rear Window Surrounds and Sill Finishers (external); Painted Filler Cap; Wheel Trims; Chromed Bumpers; Oval Instrument Nacelle trimmed Black; Ashtray in Rear Compartment.

The following items are available on all vehicles for Export at extra cost:

Heater; Radio; Laminated Windscreen; Automatic Transmission; Reclining Front Seats; Electrically Heated Rear Window; Alternator; 998 c.c. engine (Standard only on Super De-luxe); Over-riders (Export Saloon only); Passenger's Sun Visor (Saloon only).

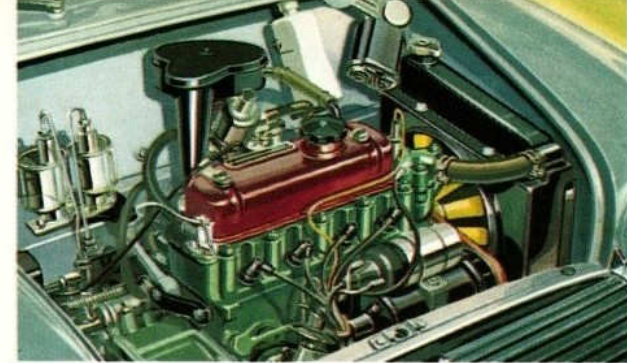
MinipassionMini.com



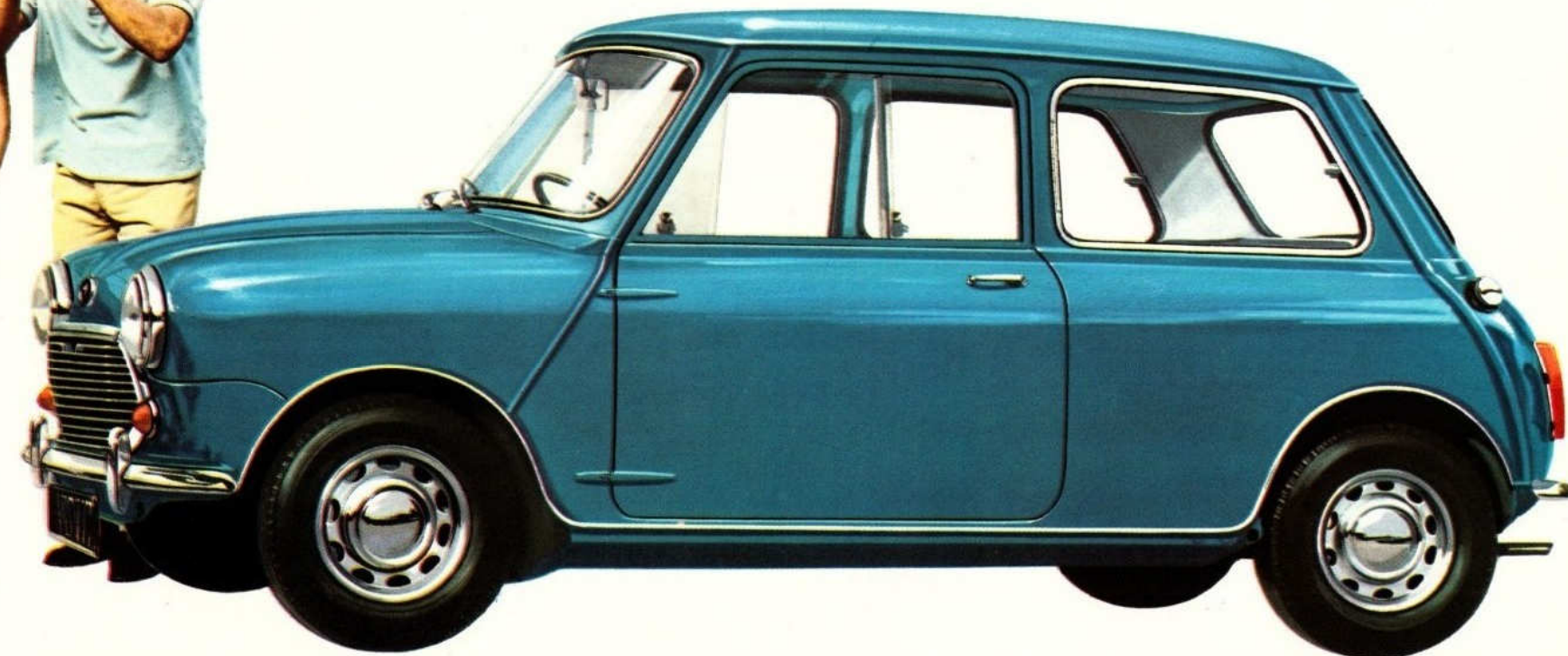
Automatic Transmission—Do it yourself or leave it to us with this exciting extra-cost option! Flick the lever into 'Drive' and the automatic transmission takes over. You travel relaxed—arrive fresh. If you want to change gear yourself, it's easier; there's no clutch pedal!

See, now, the most widely acclaimed version of the Mini Mk. II. Pert and smart in appearance, the Austin Mini Super De-luxe Saloon is fully equipped with every refinement. Among the additional items of exterior equipment included on this model are wheel trims, bumper over-riders, bright finishers to windscreen and back-light, and stainless surrounds to the lower panel sills and opening rear windows. A range of exciting colours is available on all Austin

Minis and there is an eye-catching trim chosen to complete each colour scheme. Driving equipment is second to none. Take a trip through the darkness and see how the powerful headlamps and flashing direction indicators provide the necessary confidence for comfortable night driving. You will find also that in fair weather or foul, the screen can be kept perfectly clean because in addition to the self-parking twin wiper blades, windscreen washers are fitted to all Austin Minis.



The new 998-c.c. engine on the Super De-luxe Saloon gives you more power all round, yet with fantastic economy. And the transverse power pack is still just as compact—to give you more room inside. The gears and final drive are actually housed in the engine sump! And there's a new short remote-control gear lever. If preferred the Super De-luxe Saloon is available with the well-known 848-c.c. engine, as fitted to all basic Mini Mk. II Saloons. Servicing the Austin Mini is quick and easy, at no more inconvenience than the raising of its bonnet!



MinipassionMini.com

SPECIFICATIONS

ENGINE 'Super De-luxe Saloon': Four cylinders, overhead valves with push-rod and rocker operation. Bore 64.58 mm. (2.543 in.), stroke 76.2 mm. (3.0 in.), cubic capacity 998 c.c. (60.96 cu. in.). B.h.p. 38 at 5,250 r.p.m. Maximum torque 52 lb. ft. at 2,700 r.p.m. Compression ratio 8.3 : 1. Full-flow renewable-element external oil filter.

ENGINE 'Saloon and Super De-luxe Saloon': Four cylinders, overhead valves with push-rod operation. Bore 62.9 mm. (2.478 in.), stroke 68.26 mm. (2.687 in.), cubic capacity 848 c.c. (51.74 cu. in.). B.h.p. 34 at 5,500 r.p.m. Maximum torque 44 lb. ft. at 2,900 r.p.m. Compression ratio 8.3 : 1.

FUEL SYSTEM: S.U. carburetter; electrical fuel pump; air cleaner; tank capacity 5½ gallons (25 litres).

LUBRICATION SYSTEM: Full pressure. Sump forms oil bath for gearbox and final drive; internal gear-type pump driven by camshaft; full-flow oil filter.

IGNITION SYSTEM: 12-volt coil, and distributor with automatic and vacuum control.

COOLING SYSTEM: Pressurized radiator with pump, fan, and thermostat; capacity approximately 5½ pints (3 litres), plus 1 pint (0.57 litre) for heater when fitted.

TRANSMISSION: Diaphragm spring clutch, 7½ in. (0.18 m.) diameter, hydraulic operation by pendent pedal. Gearbox, four speeds with needle-roller bearings throughout; central floor remote gear-change lever on Super De-luxe. Final drive to front wheels by open shafts with universal joints.

STEERING: Rack and pinion: 2½ turns lock to lock: two-spoke 15½ in. (0.40 m.) diameter steering-wheel. Turning circle 28 ft. (8.53 m.).

SUSPENSION: Front (includes final drive)—Independent with levers of unequal length. Incorporates *Hydrolastic displacers interconnected front to rear. Swivel axles mounted on ball joints. Rear—Independent trailing tubular levers with Hydrolastic displacers.

BRAKES: Foot—All four wheels hydraulically operated by pendent pedal with two-leading shoes at front. 7 in. diameter × 1½ in. wide front; 7 in. diameter × 1½ in. wide rear. Hand—Central pull-up lever which operates on rear wheels.

ROAD WHEELS: Pressed steel, four-stud fixing; 5.20—10 Dunlop tubeless tyres.

ELECTRICAL: 12-volt, 34 amp.-hr. capacity battery. Double-dipping headlamps; sidelamps in headlamps with separate bulb; rear lamps, stop lamps, reflectors and flashers are all combined in single units; rear number-plate illuminating lamp; separate front amber flashers; twin-blade self-parking electric windscreen wipers; single high-frequency horn. Interior lamp fitted in roof also acts as courtesy lamp.

* Hydrolastic is a registered trade mark.

**THE BRITISH MOTOR CORPORATION
LIMITED, BIRMINGHAM, ENGLAND**



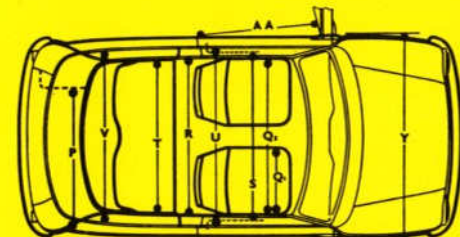
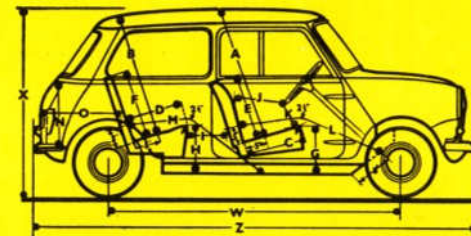
The issue of this publication does not constitute an offer, and the right is reserved to alter specifications at any time without notice. Sales are made subject to and with the benefit of the Standard Conditions of Sales and Warranty given by the Distributor or Dealer by agreement with The British Motor Corporation Limited

INSTRUMENTS: M.p.h./Km.p.h. speedometer, with fuel gauge and warning lights to show low oil pressure, dynamo not charging, dirty oil filter, direction indicators working, and headlamp high beam position. (Separate instruments for oil pressure and water temperature on Super De-luxe.) Combined ignition/starter switch. Single lever on steering-column controls horn, headlamp flasher, dip switch and self-cancelling flashing direction indicators. Windscreen washer fitted.

COACHWORK: Four-seater, four-light, two-door saloon of all-steel unitary construction. There is one large instrument nacelle in the fascia with a parcel shelf beneath trimmed in vinyl-coated fabric over polyether padding. Single interior anti-glare safety mirror. A wide seat in the rear has a companion box on each side for personal items. There is a parcel shelf behind the rear squab in addition to parcel space under the rear seat cushion. Rear quarter-panels covered with headlining material. The doors are hinged at their forward edges by outside hinges and opened by full-width cable release. Private lock incorporated in the outside handle of driver's door, while the passenger's door is locked from the inside. Door windows have two sliding glasses, each of which can be moved or fixed independently. Polyether front and rear seat cushions, rubberized hair front and rear squabs. Entire interior trim completed in vinyl-coated fabric. Adjustable driver's seat. Provision is made for installing front seat belts. Luggage compartment in the rear, access being provided by a hinged lid with a locking handle. Rear number-plate with its illuminating lamp is hinged to the lid which may be used as an additional luggage platform. Spare wheel and battery are carried on the floor of the boot, and the petrol tank is installed vertically on the left-hand side.

SUMMARY OF MINI Mk. II SPECIFICATION DIFFERENCES

MINI SALOON	MINI SUPER DE-LUXE SALOON
Fixed front passenger seat	Adjustable front passenger seat
Rubber mats front and rear	Carpets front and rear
Single crushable sun visor	Two crushable sun visors
Fixed quarter-lights	Hinged quarter-lights
Rubber mouldings to windscreen, back-light, and rear windows	Bright plastic windscreen and back-light finishers
Painted filler cap	Stainless rear window surrounds and sill finishers (external)
Painted wheels	Chromed filler cap
Chromed bumpers front and rear	Wheel trims
Circular instrument nacelle	Chromed bumpers with over-riders
	Oval instrument nacelle trimmed black
	Rubber mat over spare wheel in luggage boot
	Fresh-air heater (Home market only)
	Ashtray in rear compartment
	Kick protectors on doors and sills
Optional Extras	Optional Extras
Fresh-air heater	Automatic transmission
Automatic transmission	Reclining front seats
Reclining front seats	Electrically heated rear window
Electrically heated rear window	



DIMENSIONS

		English	Metric
Front seat cushion to roof	A	2 ft. 11 in.	0.89 m.
Rear seat cushion to roof	B	2 ft. 11 in.	0.89 m.
Front cushion depth	C	1 ft. 6 in.	0.46 m.
Rear cushion depth	D	1 ft. 5 in.	0.43 m.
Front squab height	E	1 ft. 7 in.	0.48 m.
Rear squab height	F	1 ft. 8 in.	0.51 m.
Height of front cushion	G	1 ft. 1½ in.	0.34 m.
Height of rear cushion	H	1 ft. 1 in.	0.33 m.
Back of front squab to front of rear cushion	I	max. 11½ in. min. 7½ in.	0.29 m. 0.19 m.
Steering-wheel to front squab	J	max. 1 ft. 4½ in. min 1 ft. 0½ in.	0.42 m. 0.32 m.
Steering-wheel to cushion	K	6½ in.	0.17 m.
Leg room—front	L	max. 3 ft. 7 in. min. 3 ft. 5 in.	1.10 m. 1.04 m.
Leg room—rear	M	max. 3 ft. 8½ in. min. 1 ft. 2½ in.	1.13 m. 0.98 m.
Luggage boot height	N	max. 1 ft. 4 in.	0.41 m.
Luggage boot depth	O	max. 1 ft. 7½ in.	0.49 m.
Luggage boot width	P	max. 3 ft. 2 in.	0.97 m.
Width of front bucket seat	Q1	1 ft. 8 in.	0.51 m.
Overall width of front seats	Q2	3 ft. 7½ in.	1.10 m.
Width of rear cushion	R	3 ft. 5 in.	1.04 m.
Max. front seat width at cushion level	S	3 ft. 9½ in.	1.16 m.
Max. rear seat width at cushion level	T	3 ft. 5 in.	1.04 m.
Width over front seat at shoulder height	U	3 ft. 10 in.	1.17 m.
Width over rear seat at shoulder height	V	3 ft. 8½ in.	1.13 m.
Wheelbase	W	6 ft. 8 in.	2.03 m.
Overall height	X	4 ft. 5 in.	1.35 m.
Overall width	Y	4 ft. 7½ in.	1.41 m.
Overall length	Z	10 ft. 0½ in.	3.05 m.
Rear entry width	AA	2 ft. 8 in.	0.81 m.
Kerbside weight (approx.)		11½ cwt.	584 kg.
Ground clearance		6½ in.	15.73 cm.

Due to the difference in trim style these dimensions may vary slightly between basic and Super De-luxe Saloons