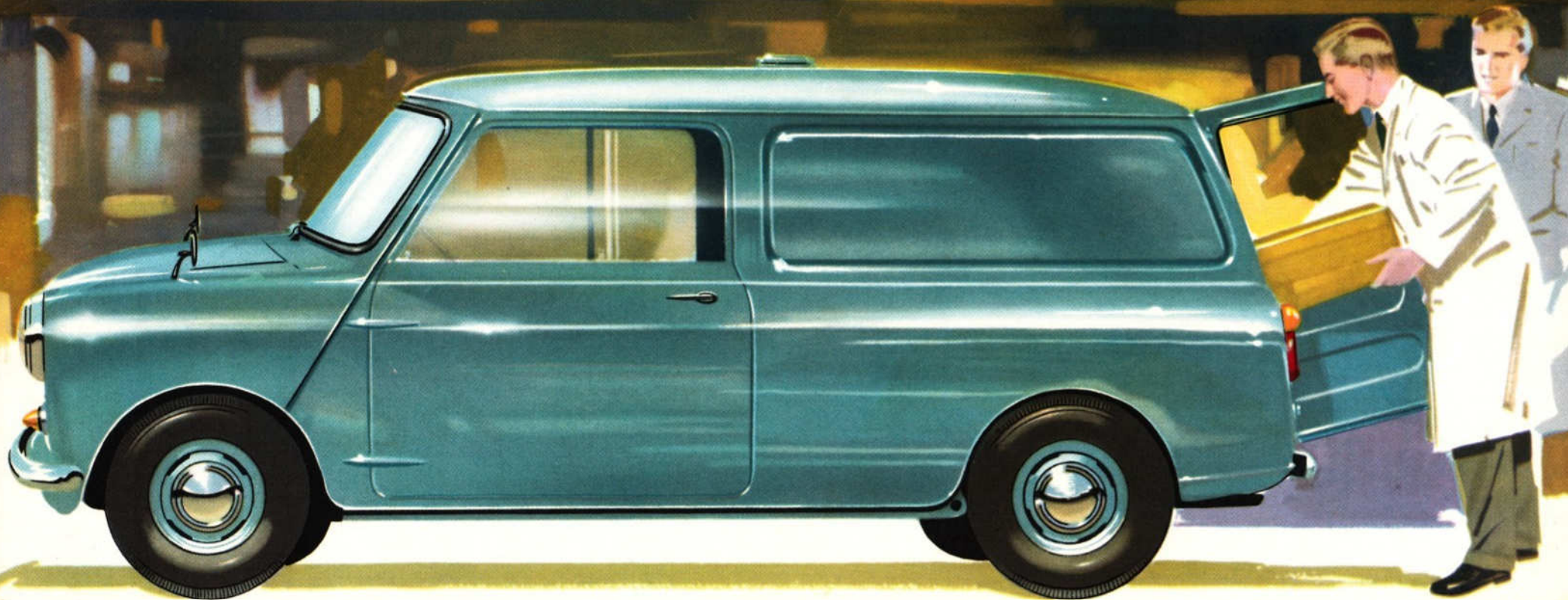


DELIVERY COSTS ~~*SLASHED!*~~



THE REVOLUTIONARY NEW

"QUALITY FIRST"

MORRIS MINI-VAN- $\frac{1}{4}$ TON

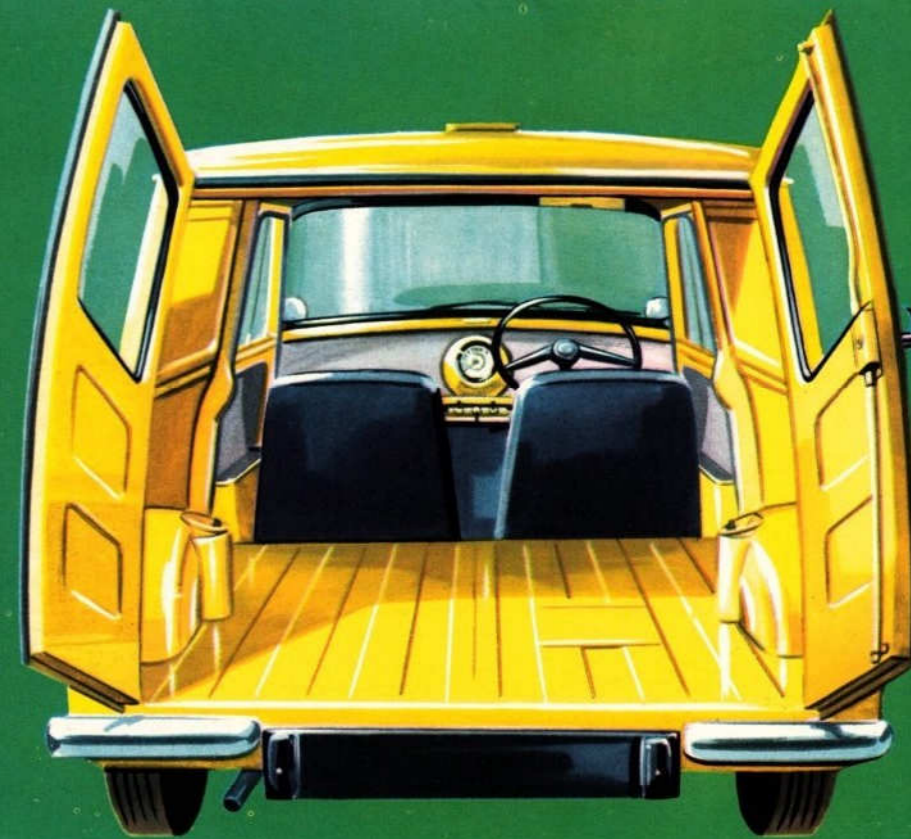
MinipassionMini.com



MinipassionMini.com

FAR MORE PAYLOAD ROOM IN FAR LESS SPACE

MinipassionMini.com



.. in a vehicle

UNDER
11ft.
LONG
3.4m

with

UP TO
50
DELIVERY-MILES
PER GALLON
18km
PER LITRE

and

**TIME
SAVING
PERFORMANCE**

It's never been achieved before—a van so BIG inside, so COMPACT outside—offering so much payload space for such low cost and upkeep!

Packed with revolutionary engineering ideas, this Morris Mini-Van is planned to cut overheads to the lowest possible figure.

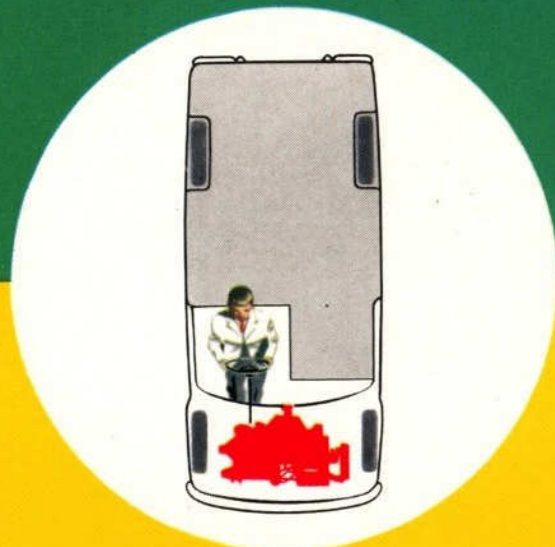
Less than 11 feet (3.4 m.) long, it is supremely manoeuvrable. Its big capacity means fewer journeys, less time wasted in 'turn-rounds', speedier on-and-off loading—a saving of many man-hours every working day!

Here's the opportunity to give a more efficient and profitable service than your competitors. Put the Mini-Van on your strength as soon as you can!

NOW SEE HOW IT'S DONE

1

**EAST-WEST
ENGINE
MOUNTING**



**Gives you
FAR MORE
PAYLOAD SPACE**

It's the most brilliant engineering achievement for years—mounting the engine 'East-West' across the frame! Provides far more payload room than ever before possible in so compact a vehicle!

2

**UNIQUE
POWER-PACK**



**Gives you
QUICKER, MORE
ECONOMIC SERVICING**

Engine, clutch, gears, and drive axle are all combined in a single easily serviced unit—and this whole unique 'Power Pack' takes up only 18 in. (46 cm.) of the vehicle's length!

3

**4 WHEEL
INDEPENDENT
RUBBER SUSPENSION**

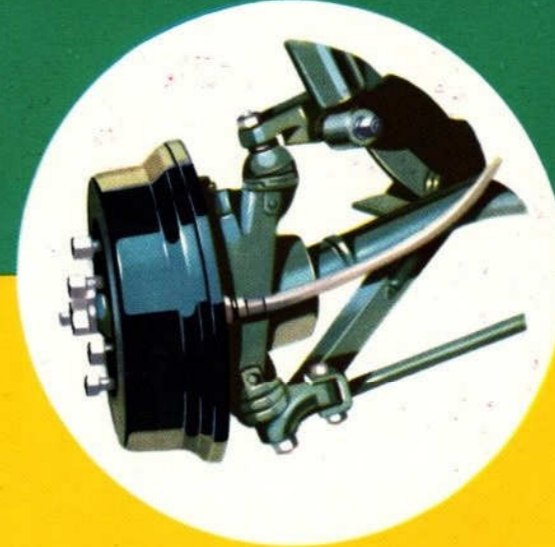


**Gives you
BETTER
LOAD PROTECTION**

Advanced system of rubber suspension, fully independent for each of the four wheels, cushions payloads against shocks and bumps—gives the driver greater comfort and freedom from fatigue!

4

**FRONT WHEEL
DRIVE**



**Gives you
EXTRA DRIVING
CONTROL AND SAFETY**

Driving is safer, control is greater, with direct transmission to the front wheels. And it's another space-saver—eliminating long transmission shaft and back axle 'hump'!

5

**COMPACT
OVERALL SIZE**



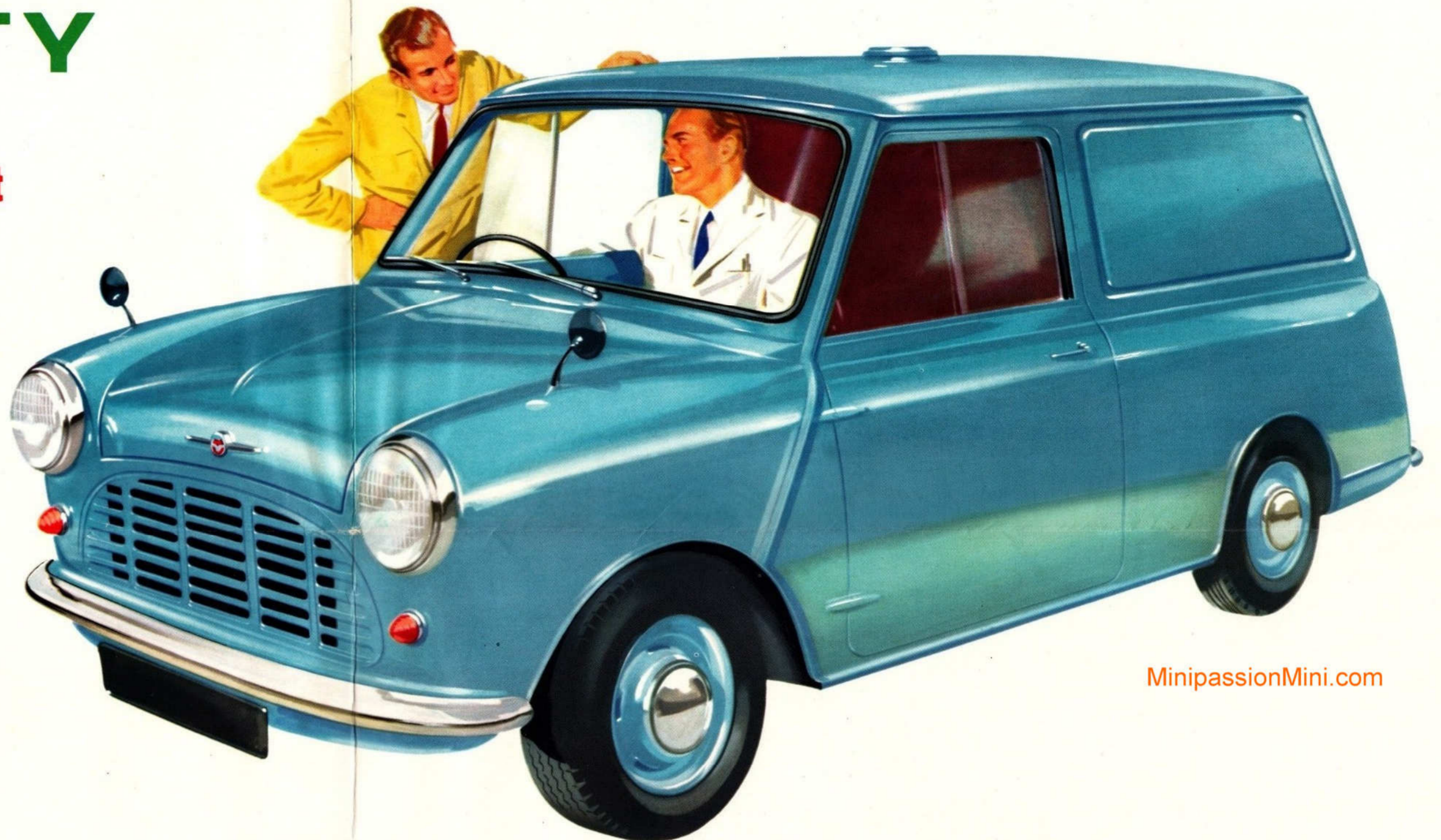
**Gives you
EASIER PARKING
QUICKER TURN-ROUNDS**

With all its amazing payload capacity, the Mini-Van is less than 11 feet (3.4 m.) long and 4½ feet (1.37 m.) wide. No wonder it parks almost anywhere—hustles through traffic so rapidly!

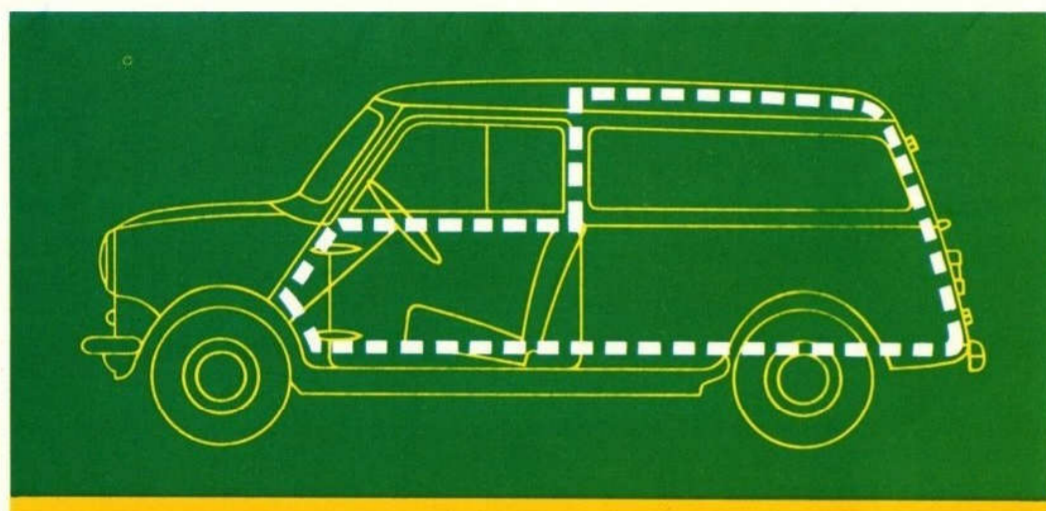
Behind these revolutionary vehicles

THE LONG-LIFE SERVICE & TOUGH RELIABILITY

that Morris users trust

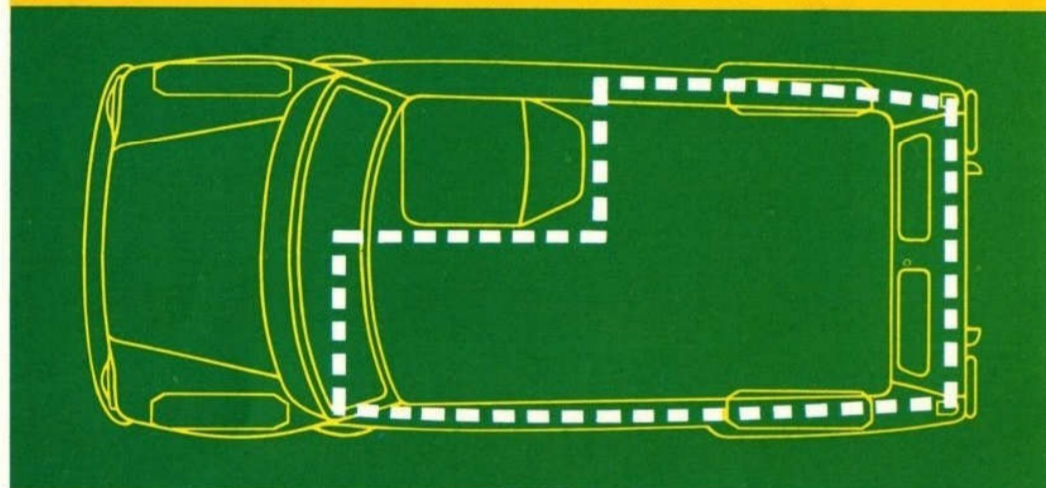


MinipassionMini.com



These diagrams show the amazing payload capacity of the compact Morris Mini-Van. Total payload room, as indicated by the dotted lines, is

58 cubic feet (46 cubic feet in the rear compartment plus 12 cubic feet beside the driver). This vehicle sets up a new standard of delivery economy!



Completely new—sensationally different—the Morris Mini-Van has arrived to revolutionize light trade transport! Here today, far ahead of its time, it offers unprecedented economy and efficiency!

They're "QUALITY FIRST" all through Sheer hard-working *reliability* is built right into this new vehicle—the top quality and performance that the Morris user knows and trusts.

Based on the Mini-Minor Saloon, the Mini-Van gives you far more payload space—because the lively four-cylinder engine is placed *across* the frame. And that's

only one of a host of revolutionary features—engine, clutch, gears and drive axle are combined in a unique 'Power Pack'. Transmission is direct to the front wheels, and all four wheels have independent rubber suspension.

Incredibly compact, this Morris Mini-Van will nip through traffic, park practically anywhere. First cost is amazingly low—it gives you up to 50 payload-miles a gallon (18 km. per litre) and has a payload capacity of 5 cwt. (254 kg.)!

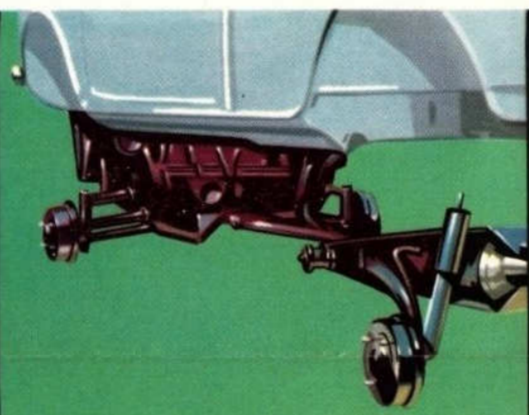
SMART LOOKING—you can trade on it Make no mistake, the Morris Mini-Van is a real good-looker. It will impress your customers, improve your service—and increase your profits!

FOR THE SMALLER MAN	
AS A SECOND VAN	
FOR THE BIG FLEET USER	

These features will appeal to the owner...



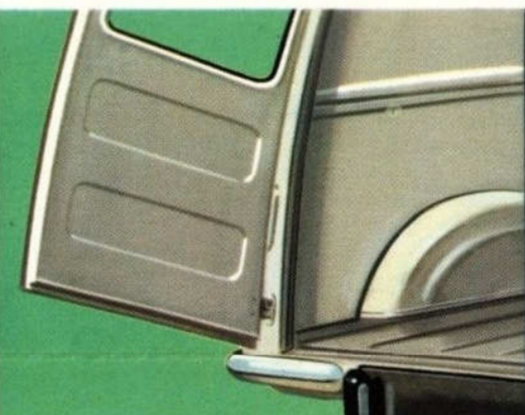
Powerful hydraulic brakes with safety pressure limiter ensure stopping in seconds—make the Morris Mini-Van a really safe vehicle.



Simple mechanical construction gives rigid strength, with sub-frames at front and rear.



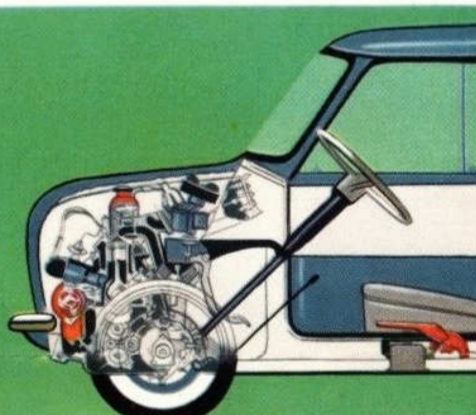
12-volt headlamps are fitted with dippers. Separate flashing direction indicators are standard equipment.



Metal check rods hold rear doors in correct open position—each door has a large window.



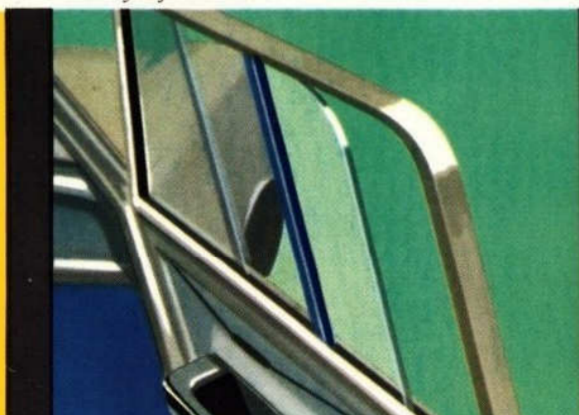
Servicing is three times as easy—the same oil and filler are used for engine, gears, and axle.



Ample room for driver's legs. Seat is easily adjustable.

and driver alike

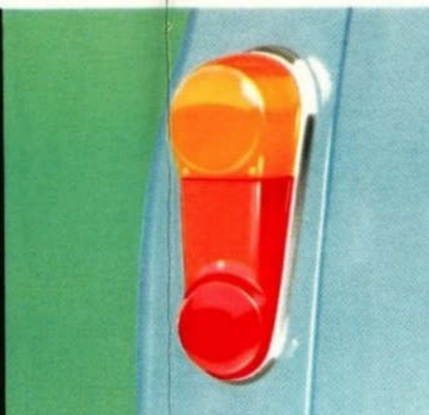
—AND YOU ONLY GET THEM ALL IN THESE NEW VEHICLES.



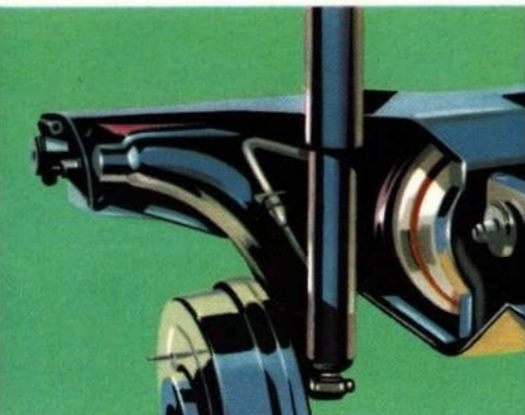
Draught-free door windows slide open and shut—extraction ventilator provided in roof.



Full-width fascia shelf and large door pockets for maps and documents.



Rear light, reflector, and flashers form a single neat tail lamp assembly.



Smooth journeys are assured by independent rubber suspension on all four wheels—protecting fragile payloads.



'East-West' engine combined with clutch, gears, and drive axle in one unit.



All instruments centred in a single group with switches and controls mounted below.



MinipassionMini.com

GO AHEAD... with the new

"QUALITY FIRST"

MORRIS

MINI-VAN-1/4 TON

WORLD'S MOST ADVANCED LIGHT TRADE TRANSPORT

SPECIFICATION

ENGINE: Four cylinders, overhead valves with push-rod and rocker operation; bore 62.94 mm. (2.48 in.), stroke 68.26 mm. (2.69 in.); cubic capacity 848 c.c. (51.74 cu. in.). Three-bearing crankshaft; main bearings and connecting rod bearings with renewable liners. Compression ratio 8.3 : 1. Aluminium-alloy pistons. Full-flow renewable-element external oil filter.

COOLING: By pressurized thermostatically controlled system with impeller pump and fan.

IGNITION: Battery and coil. Automatic advance and retard with centrifugal and vacuum control.

CARBURATION: S.U. automatic semi-downdraught type HS2 carburettor fed from rear tank by rear-mounted S.U. electric PD-type fuel pump. Air cleaner and silencer. Fuel tank capacity 6 Imperial gallons (27 litres, 7.2 U.S. gallons).

TRANSMISSION: Single-plate dry clutch with hydraulic actuation. Four-speed gearbox with synchromesh on second, third, and top gears, giving overall ratios of—first 13.657, second 8.176, third 5.317, top 3.765, and reverse 13.657 : 1. Central floor gear change. Combined transmission casing and oil sump below engine crankcase. Transversely mounted power unit with mainshaft in constant mesh with differential assembly mounted on side of transmission casing. Drive transmitted by universal-jointed shafts to the front road wheels. Final drive ratio 3.765 : 1.

BRAKES: Lockheed hydraulic fully compensated brakes. Pendent-type foot pedal, 7 in. (17.8 cm.) diameter brake-drums front and rear with leading and trailing shoes. Simple shoe adjustment which simultaneously adjusts the hand brake. Pull-up lever operates the hand brake on rear drums.

BODY: Available with an all-steel Van body. Large curved safety-glass windshield. Driver's seat with adjustment. Doors with locks. Front parcel shelf. Washable headlining to cab. The body has wide double doors for easy loading with safety-glass windows providing a good rear view. Special automatic check rods retain the rear doors in the open position, not allowing them to project beyond the width of the Van.

SUSPENSION: Independent front suspension by rubber cone spring units; upper and lower suspension arms attached

to swivel pin hubs by ball joints; independent rear suspension by rubber cone spring units and radius arms. Hydraulic telescopic dampers front and rear.

WHEELS AND TYRES: Ventilated disc-type wheels with 4-stud fixing. Dunlop 5.20—10 tubeless tyres. Spare wheel stowed in special compartment between vehicle floor and load space floor.

STEERING: Rack and pinion steering with direct linkage to steering-arms on swivel pins. 15½ in. (39.4 cm.) diameter 2-spoke steering-wheel with central horn-push. Left- or right-hand steering according to markets (L.H.D. not available in the U.K.). Turning circle 32 ft. 9 in. (9.983 m.). Track—front 3 ft. 11⅞ in. (1.205 m.), rear 3 ft. 9⅞ in. (1.164 m.).

ELECTRICAL EQUIPMENT: High-output dynamo with compensated voltage control; 12-volt 34-amp./hr. battery (at 20-hr. rate); double dipping headlamps with prefocused bulbs; foot dipping switch; parking lights; twin stop and tail lamps; rear reflectors; rear number-plate lamps; instrument lighting; dual-arm windshield wipers; electric horn; flashing direction indicators with automatic cancelling control; parcel shelf lamp; ignition, headlamp main beam, and flashing signal warning lights.

INSTRUMENTS: Speedometer with total distance recorder; fuel gauge; oil pressure warning light.

CONTROLS: Windshield wiper switch; ignition switch; lighting switch; mixture control; parcel shelf lamp switch; starter switch.

VENTILATION: Double sliding windows to each door with press-button-type lock; extraction ventilator fitted in the roof; heater and windshield-demisting equipment available as an optional extra.

GENERAL EQUIPMENT: Twin wing mirrors; rubber floor-mat with underfelt; sun visor; parcel pockets in each front door.

OPTIONAL EXTRAS: Radio, heater, windshield washer, passenger's seat, front over-riders.

COLOURS: Whitehall Beige or Smoke Grey with tan upholstery and pale grey headlining.

The issue of this folder does not constitute an offer, and the right is reserved to alter prices and/or specifications at any time without notice. Sales are conditional upon Terms of Business, Warranties, and Service arrangements issued by Morris Motors Limited and/or Nuffield Exports Limited. For prices see separate list.



MORRIS MOTORS LIMITED

OVERSEAS BUSINESS:

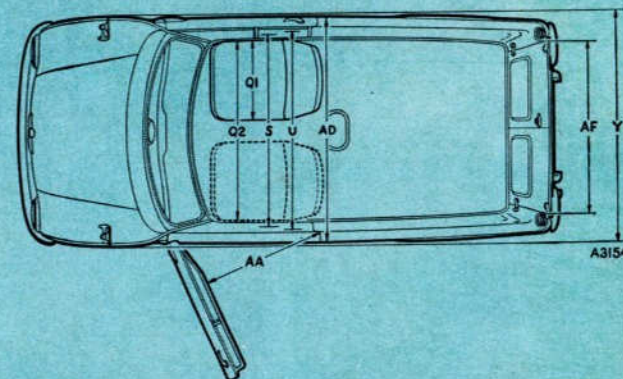
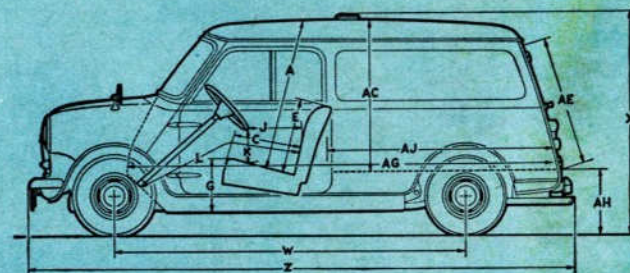
NUFFIELD EXPORTS LIMITED

Proprietors: Morris Motors Limited

COWLEY · OXFORD · ENGLAND

MinipassionMini.com

DIMENSIONS



A 3 ft. 2 in. (.97 m.)	C 1 ft. 6 in. (.46 m.)	E 1 ft. 7 in. (.48 m.)	G 1 ft. 1½ in. (.34 m.)
J (max.) 1 ft. 4½ in. (.42 m.)	J (min.) 1 ft. 0¼ in. (.32 m.)	K 6½ in. (.17 m.)	L (max.) 3 ft. 7½ in. (1.10 m.)
L (min.) 3 ft. 5 in. (1.04 m.)	Q1 1 ft. 8 in. (.51 m.)	Q2 3 ft. 7¼ in. (1.10 m.)	S 3 ft. 9¼ in. (1.16 m.)
U 3 ft. 10 in. (1.17 m.)	W 7 ft. 0½ in. (2.14 m.)	X 4 ft. 6½ in. (1.38 m.)	Y 4 ft. 7½ in. (1.41 m.)
Z 10 ft. 9¼ in. (3.30 m.)	AA 2 ft. 8 in. (.81 m.)	AC 3 ft. 1½ in. (.95 m.)	AD 4 ft. 5½ in. (1.37 m.)
AE 2 ft. 7¼ in. (.81 m.)	AF 3 ft. 4 in. (1.02 m.)	AG 8 ft. 6½ in. (2.61 m.)	AH 1 ft. 5¼ in. (.44 m.)
AJ 4 ft. 7 in. (1.40 m.)	APPROX. WEIGHT 1,334 lb. (604 kg.)	GROSS VEHICLE WEIGHT 2,044 lb. (approx.) (927 kg.)	