

Quality first



**MORRIS**

**Oxford** 1622-c.c. o.h.v. engine. 61 b.h.p. at 4,500 r.p.m. (1489-c.c. o.h.v. engine 40 b.h.p. at 4,000 r.p.m. for diesel-powered Oxford.) Four-speed gearbox with synchromesh on second, third, and top. Centre-floor or column change. Independent coil spring front suspension. Semi-elliptic rear springs. Hydraulic drum brakes. Cam and peg steering. Four-door saloon body. Very large enclosed boot. Over-all length 14 ft. 6½ in. (4.43 m.). Over-all width 5 ft. 3½ in. (1.61 m.). Fuel tank capacity 10 Imperial gallons (45.4 litres, 12 U.S. gallons). Approx. weight 21¼ cwt. (1125 kg.).

**Oxford Traveller** Specification as for Oxford VI saloon except coachwork. Four-door all-steel body with horizontal-opening, divided rear doors. Folding rear seat. Divided bench-type front seat (one-piece bench type optional). Extensive luggage space. Over-all length 14 ft. 9½ in. (4.52 m.). Approx. weight 23¼ cwt. (1181 kg.).



**M**

**Minor 1000** 1098-c.c. o.h.v. engine. Four-speed gearbox with synchromesh on second, third, and top. Independent front suspension by torsion bars. Semi-elliptic rear springs. Hydraulic drum brakes. Rack and pinion steering. Two- or four-door saloon body or two-door convertible. Enclosed boot. Over-all length 12 ft. 4 in. (3.76 m.). Over-all width 4 ft. 11⅞ in. (1.52 m.). Fuel tank capacity 6½ Imperial gallons (29.6 litres, 7.8 U.S. gallons). Approx. weight two-door and convertible 14¼ cwt. (750 kg.). Four-door 15½ cwt. (787 kg.).

**Minor Traveller** Specification as for Minor 1000 except for coachwork. The Traveller has a folding rear seat to give seating for two plus extensive load space, or seating for four with generous luggage space. Vertical-opening rear doors. Over-all length 12 ft. 5 in. (3.78 m.). Over-all width 5 ft. 1 in. (1.55 m.). Approx. weight 15¼ cwt. (800 kg.).

**Morris 1100** 1098-c.c. east-west o.h.v. engine. 48 b.h.p. at 5,100 r.p.m. Four-speed gearbox with baulk-ring synchromesh on second, third, and top. Remote-control lever. Hydrolastic 'float-on-fluid' suspension on all four wheels. Hydraulic disc brakes at front, drum at rear. Rack and pinion steering. Four-door saloon body. Large enclosed boot. Over-all length 12 ft. 2¾ in. (3.73 m.). Over-all width 5 ft. 0¾ in. (1.53 m.). Fuel tank capacity 8½ Imperial gallons (38 litres, 10 U.S. gallons). Approx. weight 16½ cwt. (840 kg.).

**Mini-Minor** Front-wheel drive. 848-c.c. east-west o.h.v. engine. 37 b.h.p. at 5,500 r.p.m. Four-speed gearbox with synchromesh on second, third, and top. Independent rubber suspension all round. Hydraulic drum brakes. Rack and pinion steering. Two-door four-seater saloon body. Rear boot. Ample parcel space. Over-all length 10 ft. 0½ in. (3.05 m.). Over-all width 4 ft. 7½ in. (1.41 m.). Fuel tank capacity 5½ Imperial gallons (25 litres, 6.6 U.S. gallons). Approx. weight 12 cwt. (610 kg.).

**Mini-Super De-luxe** Many refinements have been added to the basic Mini-Minor—to mention a few: bright plastic finishers, sound-deadening, hinged quarter-lights, foam-rubber seating, luxury carpet, chromed grille, over-riders—and all these extras are included in the list price.

**Mini-Cooper** Specification as for Mini-Minor except 997-c.c. engine with twin S.U. carburettors. 55 b.h.p. at 6,000 r.p.m. ('S' Type Cooper has 1071-c.c. engine developing 70 b.h.p. at 6,000 r.p.m.). Remote-control gear change lever. Hydraulic disc brakes at front, drum at rear. Coachwork as for Super Mini-Minor.

**Mini-Traveller** Specification as for Mini-Minor except for coachwork. The Traveller provides seating for four adults or, with the rear seat folded, seating for two plus extensive luggage space. Vertical-opening rear doors. Over-all length 10 ft. 9¾ in. (3.30 m.). Approx. weight 13 cwt. (660 kg.).



### Mini-Minor

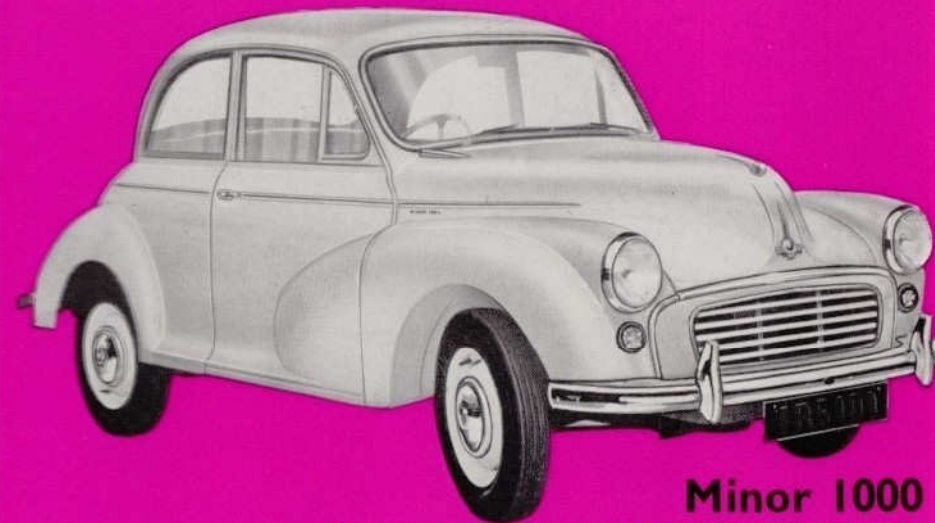
The most revolutionary cars introduced in years. Astonishing room, fantastic performance, real economy. Nippy in traffic and so easy to park. Their popularity increases daily throughout the world. Available as the Mini-Minor, Mini-Super De-luxe, Mini-Cooper, Mini-Cooper 'S' Type, and Mini-Traveller.

### Mini-Traveller



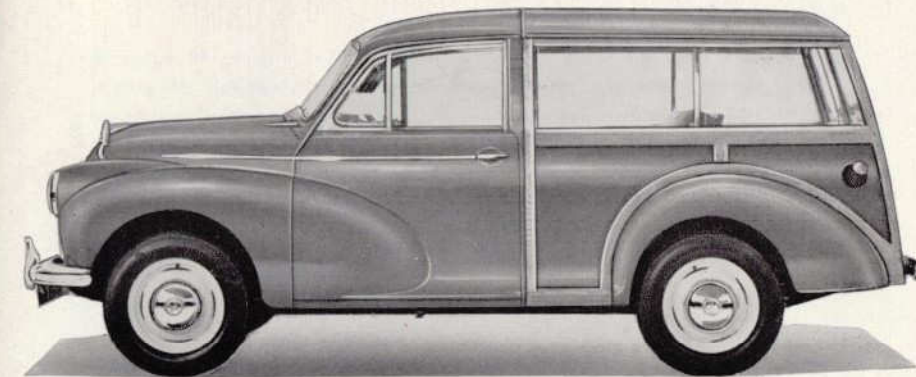
*Quality first*

# MORRIS



### Minor 1000

Britain's most successful and highly proved car has now topped the million mark. With its greater-performance 1098-c.c. engine, it is roomy, reliable, and stable, and has plenty of smooth-running power. Inexpensive to buy and maintain. Real proven value for money. Available as two- or four-door saloon.



### 1000 Traveller

The Minor 1000 Traveller is the most consistently favourite estate car of today. It is ideal for the family man, the business representative, or the small trader. Smart, versatile, and strongly built, it provides for years and years of quality-first motoring.

### Oxford

A four-door saloon with luxurious seating, extensive luggage accommodation, and a smooth, powerful performance. This is the quality car chosen by many as the best all-round family car. It is roomy, quiet, and well-appointed. For those with an eye on economy there is now a diesel-powered Oxford which offers more m.p.g., longer engine life, and less maintenance.



### Oxford Traveller

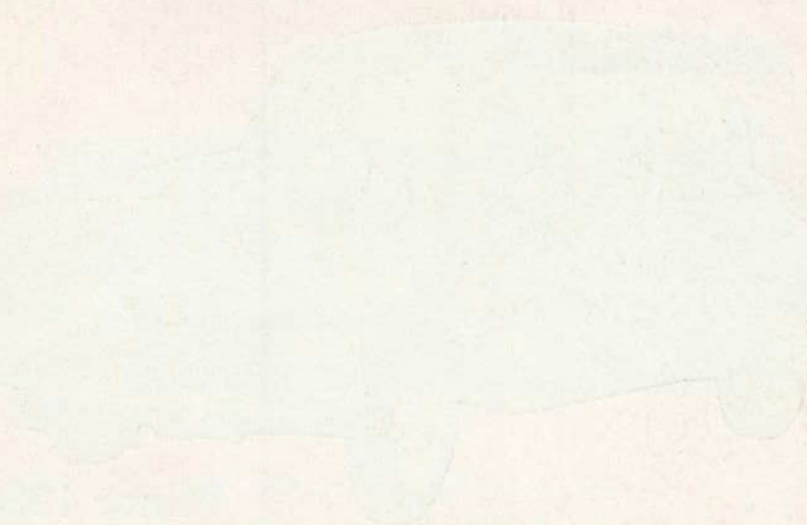
Here are all the qualities of the saloon plus the all-purpose usefulness of attractive estate car coachwork. With the rear seat folded there is room enough to sleep in the luggage area. With the rear seat erected you have a luxurious four/five-seater saloon plus an extensive easy-to-get-at load area.



### Morris 1100

Destined to be a world-beater. Seating for four or five within compact over-all dimensions. Sprightly performance with worthwhile economy. Brilliant Hydrolastic 'float-on-fluid' suspension to smooth away all road bumps and ensure superb stability on corners. East-west engine, front-wheel drive, and front disc brakes. A four-door wonder car.





[MinipassionMini.com](http://MinipassionMini.com)



MORRIS MOTORS LIMITED  
COWLEY, OXFORD

*Overseas Business:*

NUFFIELD EXPORTS LIMITED

*Proprietors: MORRIS MOTORS LIMITED*

COWLEY, OXFORD

*The issue of this publication does not constitute an offer, and the right is reserved to alter prices and/or specifications at any time without notice. Sales are made subject to and with the benefit of the Morris Motors Limited or Nuffield Exports Limited Conditions of Sale and Warranty, copies of which are available from Distributors and Dealers. For prices see separate list.*