

*MINI*

COOPER 35



MinipassionMini.com

MINI  
MILESTONES

1961

Mini Cooper first introduced, with twin carb 997cc engine and disc brakes.

1963

Mini Cooper S introduced, with 1071cc engine and larger, servo-assisted disc brakes.

1964

Driven by Paddy Hopkirk with Henry Liddon, Mini Cooper 33 EJB wins Monte Carlo Rally. 1275cc engine introduced.

1965

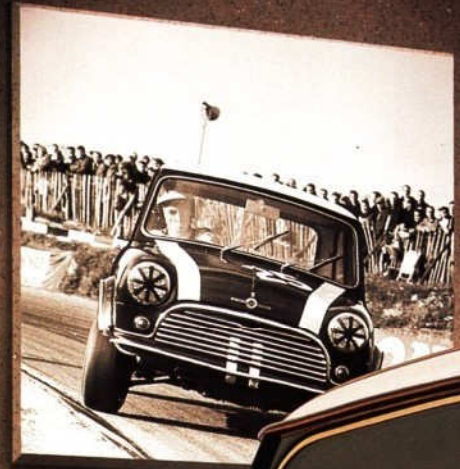
1275cc Mini Cooper AJB 44B wins Monte Carlo Rally with Timo Makinen at the wheel.

1967

Mini Cooper scores third Monte Carlo win of the decade.

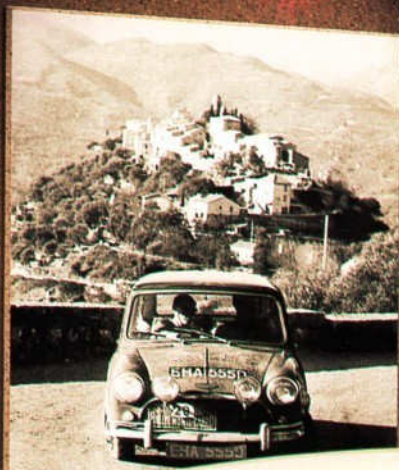
1996

After Mini Cooper is relaunched in 1990, Mini Cooper 35 celebrates three and a half glorious decades in 1996.



Cooper





[MinipassionMini.com](http://MinipassionMini.com)

DRIVE THE ORIGINAL

It's 35 years since the Mini Cooper first rolled off the production line and went on to make history. Winning the Monte Carlo Rally three times in the Swinging 60s. And out-maneuvring far larger and more powerful rivals in countless other racing and rallying events.

The Mini Cooper was a small miracle. Competitors simply couldn't believe that the cheeky little cars storming past them up snow-packed Alpine slopes had only a 997cc engine and rubber cone suspension.

The engine was developed to 1071cc, and in 1964 John Cooper increased the stroke to produce the 1275cc Mini Cooper. It raced to victory on its first outing. We felt that such a winning streak deserves celebrating. So now you can drive a Cooper which is certain to become a collector's item.



Get behind the wheel of the Mini Cooper 35, and you're transported back to the glory days of the 1960s.



The same racing car constructor helped to create today's Cooper.



To the last detail, the Cooper 35 evokes the original.

Handling is as sharp as ever.



[MinipassionMini.com](http://MinipassionMini.com)



Drive the legend;

time and time again,

the Coopers came

home to win against

all the odds.

The Mini Cooper 35 is startlingly like its illustrious forebears. The unique Almond Green paint is an original colour, specially reproduced for the Cooper's 35th birthday. The bank of four auxiliary lamps, and sports alloy wheels painted in metallic Charcoal, are further reminders of the car's legendary prowess.



The 1275cc engine

now has fuel

injection and

a catalyst.

Monte winner; and

the Coopers claimed

scores of other racing

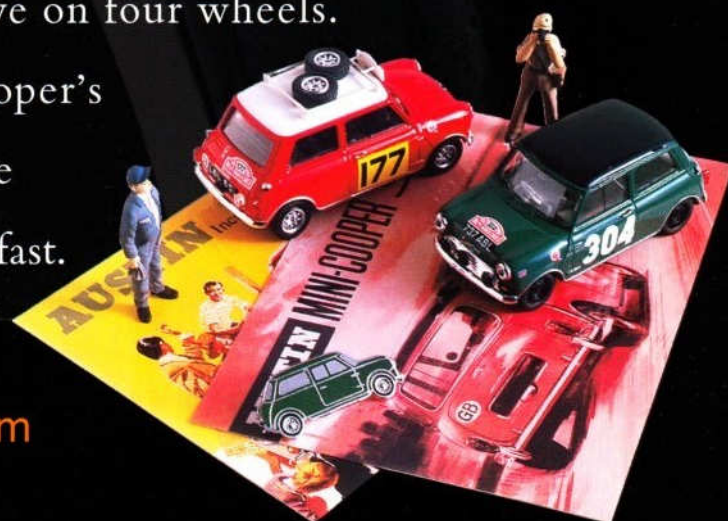
and rallying victories.

The Porcelain Green interior has been carefully matched to the original colour. As a birthday surprise, the cabin is trimmed in leather, from the seats to the steering wheel and gearknob.



Drive; and enjoy handling which is as exhilarating today as it was three and a half decades ago. The best fun you can have on four wheels.

Celebrate the Mini Cooper's 35th birthday soon. Not many are being built; and they're sure to go fast.



[MinipassionMini.com](http://MinipassionMini.com)



## SPECIFICATION

### Engine & Transmission

- 4 cylinder, transverse, OHV, 1275cc, 63Ps (EEC) @ 5700 RPM with electronic single-point fuel injection and 3-way controlled catalyst.
- 4-speed manual gearbox.

### Suspension

- All independent, rubber cone springs, telescopic dampers.

### Steering

- Rack and Pinion.

### Brakes

- Servo-assisted, dual circuit system, discs front, drums rear.

### Wheels & Tyres

- 12" Charcoal painted sports style alloy wheels with 165/60 x 12 low profile radial ply tyres and locking wheelnuts.

### Electrical (12 volt negative earth system)

- Two column stalks for indicators, horn, headlamp dip/main beam/flash, 2-speed wipers with flick wipe and electric screen washers. Hazard warning lamps. Heated rear window. Side repeater flashers. Tungsten headlamps. Four auxiliary driving lamps. Rear fog guard lamp. Twin reversing lamps. Remote control perimeter anti-theft alarm with passive engine immobiliser.

### In-Car Entertainment

- Electronic tune 3-band stereo radio/cassette (R660) with security code theft deterrent, detachable keypad, auto reverse, Autostore and 2 rear speakers. Wing mounted aerial.

### Instrumentation

- Triple-pack binnacle incorporating speedometer, tachometer and fuel level and water temperature gauges.
- Warning lights for direction indicators, main beam, ignition/no charge, low oil pressure, brake circuit failure, heated rear window and rear fog guard lamp.

### Interior Features

- Full width burr walnut fascia, incorporating glovebox, radio/cassette, analogue clock and instrument pack.
- Rear view mirror with anti-dazzle coating.
- Twin sun visors with passenger's vanity mirror.
- Reclining, tilting front seats.
- Upholstered front seat head restraints.
- Fresh air heater/demister with face level air vents.

- Inertia reel front and rear seat belts.
- 3-spoke Porcelain Green leather trimmed steering wheel with unique badge.
- Front ashtray.
- Porcelain Green leather seat facings.
- Porcelain Green trimmed door casings.
- Porcelain Green leather trimmed gearknob.
- Gear lever gaiter.
- Internal bonnet release.
- Twin door bins.
- Rear companion boxes.
- Boot mat.

### Body Features

- Comprehensive anti-corrosion treatment with 6 year warranty.
- Laminated windscreen.
- Locking fuel filler cap.
- Twin colour-keyed door mirrors.
- Chrome bumpers, door and boot handles.
- Chrome effect grille.
- Chrome grille surround.
- Chrome rear window surrounds.
- Unique 'Cooper Anniversary' decal treatment.
- 'Cooper' bonnet badge.
- Body colour spats.

### Exterior Body Colour

- Almond Green.

### Economy

■ Imperial mpg		■ Metric L/100km	
Urban	36.5	Urban	7.7
@ 56mph	50.2	@ 90km/h	5.6
@ 75mph	34.3	@ 120km/h	8.2

All economy figures shown are produced in accordance with the Passenger Car Fuel Consumption Order 1983. They have been calculated using a standard testing procedure. Under normal use a car's actual fuel consumption figures may differ from those achieved through the test procedure, depending on driving technique, road and traffic conditions, environmental factors, and vehicle condition.

### Performance

■ 0-60 mph in secs	11.5
■ 30-50 mph in secs (4th gear)	9.8
■ 50-70 mph in secs (4th gear)	12.4
■ Top speed (mph)	92
■ Torque (EEC)	95Nm @ 3900 rpm

**Important Notice:** Rover Cars is constantly seeking ways to improve the specification, design and production of its vehicles and alterations take place continually. Whilst every effort is made to produce up to date literature, this UK market brochure should not be regarded as an infallible guide to current specifications, nor does it constitute an offer for the sale of any particular vehicle. Distributors and Dealers are not agents of Rover Cars and have absolutely no authority to bind Rover Cars by any express or implied undertaking or representation. Any offers referred to in this brochure relating to Optional Warranty, Insurance Scheme, Car Rental Facility and Car Finance Facility are only available in the United Kingdom. An alternative Car Finance Facility is however available in Ireland, full details of which are available from your Rover dealer. Any reference in this brochure to speed or performance should not be taken as an encouragement to drive either dangerously or at speeds in excess of the national limit. Fuel specifications used in this brochure refer to current production models. If in any doubt, please consult your dealer.

For further information on Rover products contact Rovercall (Rover Customer Service) on 0800 620820.  
© Rover Group Limited 1996.

MinipassionMini.com

Rover Cars  
P.O. Box 395  
Longbridge  
Birmingham B31 2TL

Printed by P.J. Reproductions Ltd., London, England.